

**BALDOR • RELIANCE**

---

# Customer information packet

## CSSWDM3457

.33HP, 3450RPM, 3PH, 60HZ, 56C, 3512M, TENV, F1

Class - None

Division - Not Applicable

## Specifications

Enclosure	TENV
Frame	56C
Frame Material	Stainless Steel
Frequency	60.00 Hz
Haz Area Class and Group	None
Haz Area Division	Not Applicable
Motor Letter Type	Three Phase
Output @ Frequency	.330 HP @ 60 HZ
Phase	3
Synchronous Speed @ Frequency	3600 RPM @ 60 HZ
Voltage @ Frequency	460.0 V @ 60 HZ 230.0 V @ 60 HZ 208.0 V @ 60 HZ
Agency Approvals	CSA UR
Ambient Temperature	40 °C
Auxillary Box	No Auxillary Box
Auxillary Box Lead Termination	None
Base Indicator	Rigid
Bearing Grease Type	Polyrex EM (-20F +300F)
Blower	None
Current @ Voltage	1.200 A @ 208.0 V 1.100 A @ 230.0 V .550 A @ 460.0 V
Design Code	B
Drip Cover	No Drip Cover
Duty Rating	CONT
Efficiency @ 100% Load	74.0 %
Electrically Isolated Bearing	Not Electrically Isolated
Feedback Device	NO FEEDBACK
Front Face Code	Standard
Front Shaft Indicator	None

## Part detail

Revision	S
Type	AC
Mech. spec.	35V814
Base	
Status	PRD/A
Elec. spec.	35WG5766
Layout	35LYV814
Eff. date	02-19-2024
CD Diagram	CD0005
Poles	02
Leads	9#18
Proprietary	False
Created date	12-18-2013

Heater Indicator	No Heater
High Voltage Full Load Amps	0.6 a
Insulation Class	F
Inverter Code	Not Inverter
KVA Code	J
Lifting Lugs	No Lifting Lugs
Locked Bearing Indicator	Locked Bearing
Motor Lead Exit	Ko Box
Motor Lead Quantity/Wire Size	9 @ 18 AWG
Motor Lead Termination	Flying Leads
Motor Standards	NEMA
Motor Type	3512M
Mounting Arrangement	F1
Number of Poles	2
Overall Length	11.09 IN
Power Factor	80
Product Family	Wash Down All Stainless Steel
Pulley End Bearing Type	Sealed Bearing
Pulley Face Code	C-Face
Pulley Shaft Indicator	Standard
Rodent Screen	None
RoHS Status	ROHS COMPLIANT
Service Factor	1.15
Shaft Diameter	0.625 IN
Shaft Extension Location	Pulley End
Shaft Ground Indicator	No Shaft Grounding
Shaft Rotation	Reversible
Shaft Slinger Indicator	No Slinger
Speed	3450 rpm
Speed Code	Single Speed
Starting Method	Direct on line
Thermal Device - Bearing	None
Thermal Device - Winding	None
Vibration Sensor Indicator	No Vibration Sensor

Winding Thermal 1

None

---

Winding Thermal 2

None

---

**Nameplate**

<b>NP1951A01</b>									
<b>CAT.NO.</b>	CSSWDM3457								
<b>SPEC.</b>	35V814-5766G1								
<b>HP</b>	.33								
<b>VOLTS</b>	208-230/460								
<b>AMP</b>	1.2-1.1/.55								
<b>RPM</b>	3450								
<b>FRAME</b>	56C		<b>HZ</b>	60		<b>PH</b>	3		
<b>SER.F.</b>	1.15	<b>CODE</b>	J	<b>DES</b>	B	<b>CLASS</b>	F		
<b>NEMA-NOM-EFF</b>	74	<b>PF</b>	80						
<b>RATING</b>	40C AMB-CONT								
<b>CC</b>									
<b>DE</b>	6205	<b>ODE</b>	6203						
<b>ENCL</b>	TENV	<b>SN</b>							
	10:1CT 20:1VT								

**AC Induction Motor Performance Data**

Record # 50347

Typical performance - not guaranteed values

<b>Winding: 35WG5766-R007</b>		<b>Type: 3512M</b>		<b>Enclosure: TENV</b>	
<b>Nameplate Data</b>			<b>460 V, 60 Hz: High Voltage Connection</b>		
<b>Rated Output (HP)</b>	.33	<b>Full Load Torque</b>	0.498 LB-FT		
<b>Volts</b>	208-230/460	<b>Start Configuration</b>	direct on line		
<b>Full Load Amps</b>	1.2-1.1/.55	<b>Breakdown Torque</b>	2.1 LB-FT		
<b>R.P.M.</b>	3450	<b>Pull-up Torque</b>	1.5 LB-FT		
<b>Hz</b>	60 <b>Phase</b>	3	<b>Locked-rotor Torque</b>	1.7 LB-FT	
<b>NEMA Design Code</b>	<b>B KVA Code</b>	J	<b>Starting Current</b>	3.75 A	
<b>Service Factor (S.F.)</b>	1.15		<b>No-load Current</b>	0.313 A	
<b>NEMA Nom. Eff.</b>	74 <b>Power Factor</b>	80	<b>Line-line Res. @ 25°C</b>	48.2 Ω	
<b>Rating - Duty</b>	40C AMB-CONT		<b>Temp. Rise @ Rated Load</b>	38°C	
<b>S.F. Amps</b>			<b>Temp. Rise @ S.F. Load</b>	43°C	
			<b>Locked-rotor Power Factor</b>	67	
			<b>Rotor inertia</b>	0.0332 LB-FT <sup>2</sup>	

**Load Characteristics 460 V, 60 Hz, 0.33 HP**

<b>% of Rated Load</b>	<b>25</b>	<b>50</b>	<b>75</b>	<b>100</b>	<b>125</b>	<b>150</b>	<b>S.F.</b>
<b>Power Factor</b>	55	68	77	82	86	87	84
<b>Efficiency</b>	40.5	56.6	64.2	68	70.2	71.2	69.4
<b>Speed</b>	3548	3520	3491	3459	3425	3387	3450
<b>Line amperes</b>	0.349	0.404	0.471	0.549	0.633	0.729	0.602

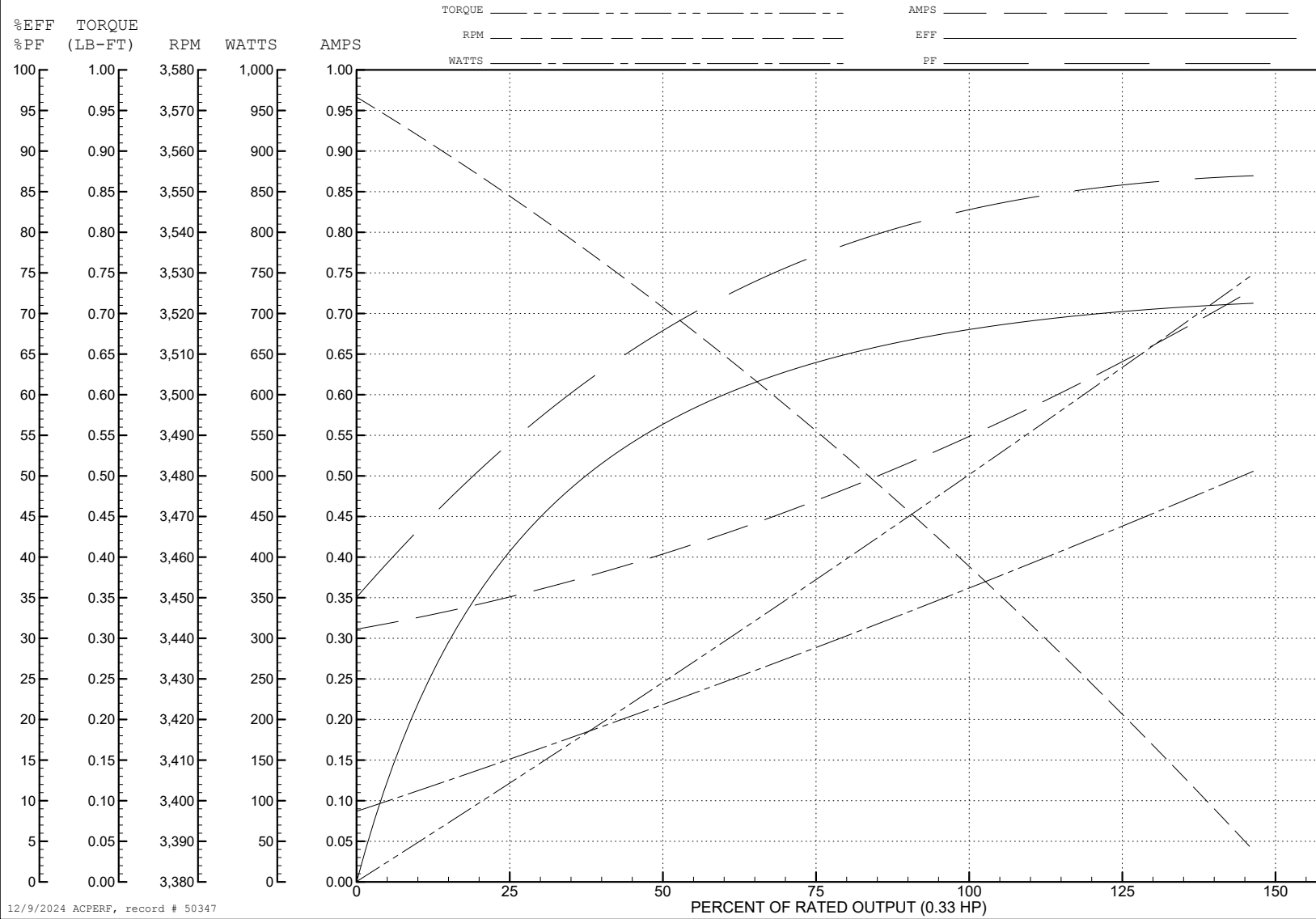
ABB Motors and Mechanical Inc.

WINDING # 35WG5766

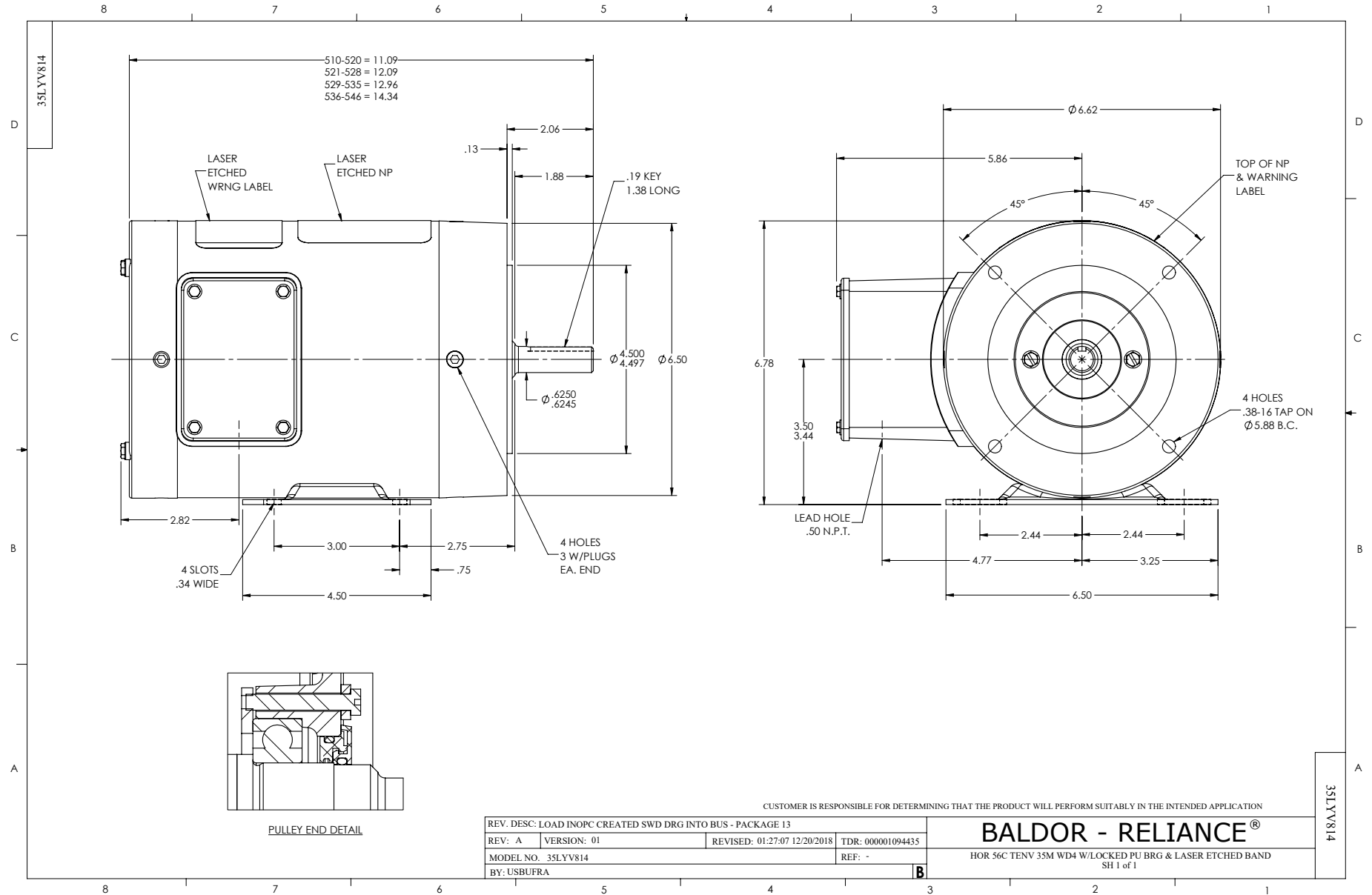
0.33 HP 3 PH 60 HZ 3450 RPM 460 V 3512M

Typical performance - not guaranteed values.

TORQUES (LB-FT): PO=2.1 PU=1.5 LR=1.7 LRA=3.75



12/9/2024 ACPERF, record # 50347





CD0005



LOW VOLTAGE  
(2Y)



LINE

HIGH VOLTAGE  
(1Y)



LINE

NOTES:

1. INTERCHANGE ANY TWO LINE LEADS TO REVERSE ROTATION.
2. OPTIONAL THERMOSTATS ARE PROVIDED WHEN SPECIFIED.
3. ACTUAL NUMBER OF INTERNAL PARALLEL CIRCUITS MAY BE A MULTIPLE OF THOSE SHOWN ABOVE.
4. LEAD COLORS ARE OPTIONAL. LEADS MUST ALWAYS BE NUMBERED AS SHOWN.

CD0005

REV. DESC: REVISE TO SHOW OPTIONAL COLORS			
REV. LTR: E	BY: JLP	REVISED: 01/19/99 10:15	TDR: 0171435
S00000		FILE: AAA00005140	MDL: -
		MTL: -	

**BALDOR ELECTRIC Co.**

3PH, DV, 9 LEADS