

BALDOR • RELIANCE

Customer information packet

CSSWDM3541

.75HP, 3450RPM, 3PH, 60HZ, 56C, 3518M, TENV, F1

Class - None

Division - Not Applicable

Specifications

Enclosure	TENV
Frame	56C
Frame Material	Stainless Steel
Frequency	60.00 Hz
Haz Area Class and Group	None
Haz Area Division	Not Applicable
Motor Letter Type	Three Phase
Output @ Frequency	.750 HP @ 60 HZ
Phase	3
Synchronous Speed @ Frequency	3600 RPM @ 60 HZ
Voltage @ Frequency	230.0 V @ 60 HZ 460.0 V @ 60 HZ
Agency Approvals	UR CSA
Ambient Temperature	40 °C
Auxillary Box	No Auxillary Box
Auxillary Box Lead Termination	None
Base Indicator	Rigid
Bearing Grease Type	Polyrex EM (-20F +300F)
Blower	None
Current @ Voltage	1.100 A @ 460.0 V 2.200 A @ 230.0 V 2.300 A @ 208.0 V
Design Code	B
Drip Cover	No Drip Cover
Duty Rating	CONT
Efficiency @ 100% Load	80.0 %
Electrically Isolated Bearing	Not Electrically Isolated
Feedback Device	NO FEEDBACK
Front Face Code	Standard
Front Shaft Indicator	None
Heater Indicator	No Heater

Part detail

Revision	AE
Type	AC
Mech. spec.	35V814
Base	
Status	PRD/A
Elec. spec.	35WGT097
Layout	35LYV814
Eff. date	02-19-2024
CD Diagram	CD0005
Poles	02
Leads	9#18
Proprietary	False
Created date	06-22-2007

High Voltage Full Load Amps	1.1 a
Insulation Class	F
Inverter Code	Not Inverter
KVA Code	N
Lifting Lugs	No Lifting Lugs
Locked Bearing Indicator	Locked Bearing
Motor Lead Exit	Ko Box
Motor Lead Quantity/Wire Size	9 @ 18 AWG
Motor Lead Termination	Flying Leads
Motor Standards	NEMA
Motor Type	3518M
Mounting Arrangement	F1
Number of Poles	2
Overall Length	11.09 IN
Power Factor	80
Product Family	Wash Down All Stainless Steel
Pulley End Bearing Type	Sealed Bearing
Pulley Face Code	C-Face
Pulley Shaft Indicator	Standard
Rodent Screen	None
RoHS Status	ROHS COMPLIANT
Service Factor	1.25
Shaft Diameter	0.625 IN
Shaft Extension Location	Pulley End
Shaft Ground Indicator	No Shaft Grounding
Shaft Rotation	Reversible
Shaft Slinger Indicator	No Slinger
Speed	3450 rpm
Speed Code	Single Speed
Starting Method	Direct on line
Thermal Device - Bearing	None
Thermal Device - Winding	None
Vibration Sensor Indicator	No Vibration Sensor
Winding Thermal 1	None

Winding Thermal 2

None

Nameplate

NP1951A01									
CAT.NO.	CSSWDM3541								
SPEC.	35V814T097								
HP	.75								
VOLTS	230/460								
AMP	2.2/1.1								
RPM	3450								
FRAME	56C		HZ	60		PH	3		
SER.F.	1.25	CODE	N	DES	B	CLASS	F		
NEMA-NOM-EFF	80	PF	80						
RATING	40C AMB-CONT								
CC									
DE	6205	ODE	6203						
ENCL	TENV	SN							
	SFA 2.6/1.3								
	4:1CT 20:1VT								

AC Induction Motor Performance Data

Record # 9255

Typical performance - not guaranteed values

Winding: 35WGT097-R001		Type: 3518M		Enclosure: TENV	
Nameplate Data			460 V, 60 Hz: High Voltage Connection		
Rated Output (HP)	.75		Full Load Torque	1.1 LB-FT	
Volts	230/460		Start Configuration	direct on line	
Full Load Amps	2.2/1.1		Breakdown Torque	7.6 LB-FT	
R.P.M.	3450		Pull-up Torque	4.1 LB-FT	
Hz	60 Phase	3	Locked-rotor Torque	5.6 LB-FT	
NEMA Design Code	B KVA Code	N	Starting Current	11.7 A	
Service Factor (S.F.)	1.25		No-load Current	0.61 A	
NEMA Nom. Eff.	80 Power Factor	80	Line-line Res. @ 25°C	14.8 Ω	
Rating - Duty	40C AMB-CONT		Temp. Rise @ Rated Load	65°C	
S.F. Amps	2.6/1.3		Temp. Rise @ S.F. Load	77°C	

Load Characteristics 460 V, 60 Hz, 0.75 HP

% of Rated Load	25	50	75	100	125	150	S.F.
Power Factor	45	63	73	80	81	80	0
Efficiency	62.6	74.4	78.7	80.4	80.7	80.1	0
Speed	3571	3536	3509	3477	3444	3406	0
Line amperes	0.66	0.76	0.91	1.09	1.29	1.52	1.3

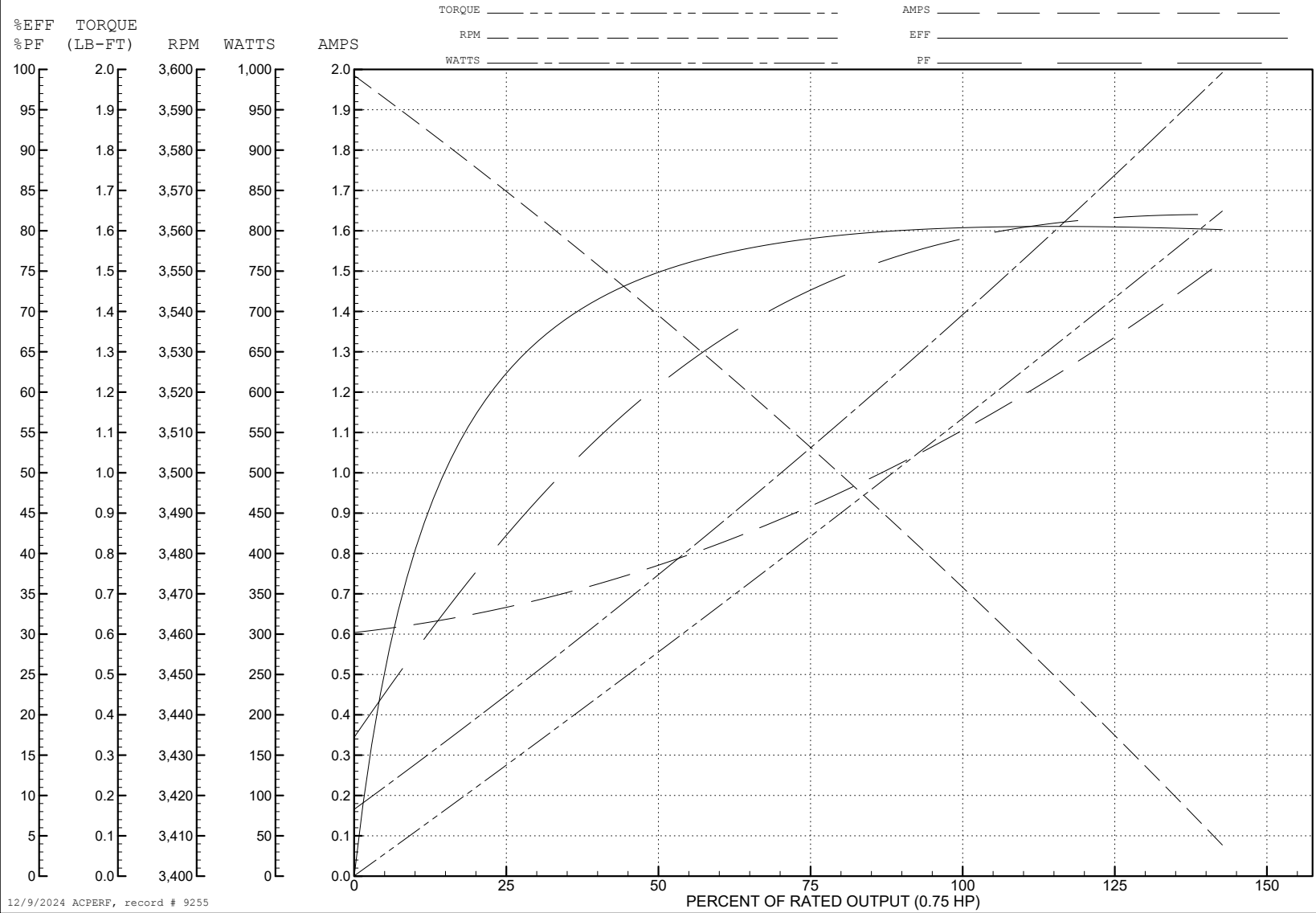
ABB Motors and Mechanical Inc.

WINDING # 35WGT097

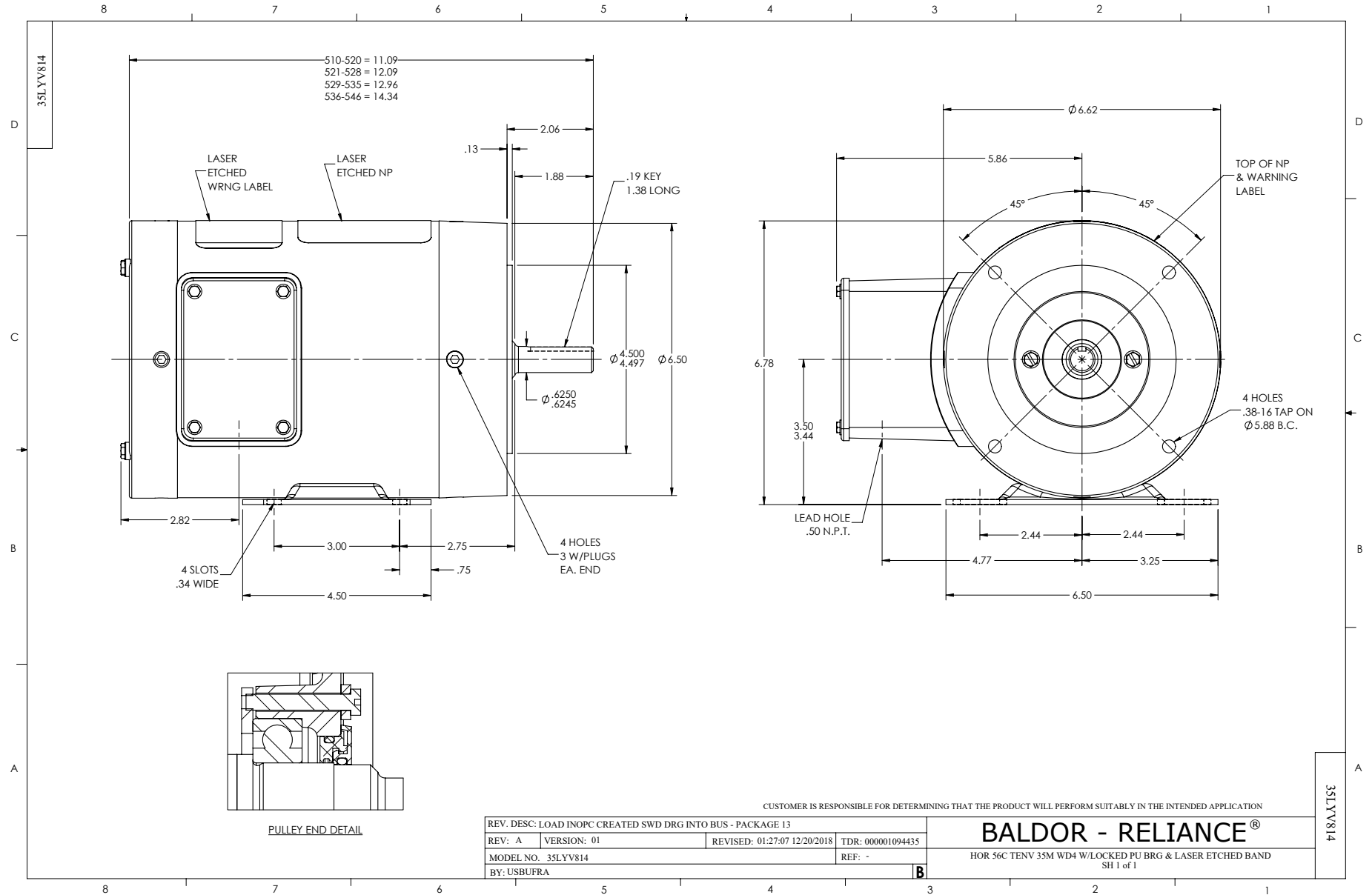
0.75 HP 3 PH 60 HZ 3450 RPM 460 V 3518M

Typical performance - not guaranteed values.

TORQUES (LB-FT): PO=7.6 PU=4.1 LR=5.6 LRA=11.7



12/9/2024 ACPERF, record # 9255



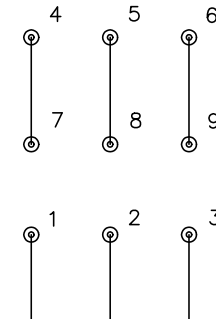
CD0005



LOW VOLTAGE
(2Y)



HIGH VOLTAGE
(1Y)



NOTES:

1. INTERCHANGE ANY TWO LINE LEADS TO REVERSE ROTATION.
2. OPTIONAL THERMOSTATS ARE PROVIDED WHEN SPECIFIED.
3. ACTUAL NUMBER OF INTERNAL PARALLEL CIRCUITS MAY BE A MULTIPLE OF THOSE SHOWN ABOVE.
4. LEAD COLORS ARE OPTIONAL. LEADS MUST ALWAYS BE NUMBERED AS SHOWN.

REV. DESC: REVISE TO SHOW OPTIONAL COLORS			
REV. LTR: E	BY: JLP	REVISED: 01/19/99 10:15	TDR: 0171435
S00000		FILE: AAA00005140	MDL: -
		MTL: -	

BALDOR ELECTRIC Co.

3PH, DV, 9 LEADS

CD0005