

BALDOR • RELIANCE

Customer information packet

L1430T

5HP, 1725RPM, 1PH, 60HZ, 184T, 3634LC, ODTF, F1

Class - None

Division - Not Applicable

Specifications

Enclosure	ODTF
Frame	184T
Frame Material	Steel
Frequency	60.00 Hz
Haz Area Class and Group	None
Haz Area Division	Not Applicable
Motor Letter Type	Cap Start, Cap Run
Output @ Frequency	5.000 HP @ 60 HZ
Phase	1
Synchronous Speed @ Frequency	1800 RPM @ 60 HZ
Voltage @ Frequency	230.0 V @ 60 HZ
Agency Approvals	UR CSA
Ambient Temperature	40 °C
Auxillary Box	No Auxillary Box
Auxillary Box Lead Termination	None
Base Indicator	Rigid
Bearing Grease Type	Polyrex EM (-20F +300F)
Blower	None
Current @ Voltage	20.600 A @ 230.0 V 22.700 A @ 208.0 V
Design Code	L
Drip Cover	Drip Cover
Duty Rating	CONT
Efficiency @ 100% Load	84.0 %
Electrically Isolated Bearing	Not Electrically Isolated
Feedback Device	NO FEEDBACK
Front Face Code	Standard
Front Shaft Indicator	None
Heater Indicator	No Heater
High Voltage Full Load Amps	20.6 a
Insulation Class	F

Part detail

Revision	L
Type	AC
Mech. spec.	36M926
Base	
Status	PRD/A
Elec. spec.	36WGT077
Layout	36LYM926
Eff. date	05-10-2024
CD Diagram	CD0017A02
Poles	04
Leads	2#10 A PH,2#16 B PH
Proprietary	False
Created date	01-06-2010

Inverter Code	Not Inverter
IP Rating	NONE
KVA Code	H
Lifting Lugs	No Lifting Lugs
Locked Bearing Indicator	No Locked Bearing
Motor Lead Exit	Ko Box
Motor Lead Quantity/Wire Size	2 @ 10 AWG, A PH
Motor Lead Termination	Flying Leads
Motor Standards	NEMA
Motor Type	3634LC
Mounting Arrangement	F1
Number of Poles	4
Overall Length	16.53 IN
Power Factor	94
Product Family	General Purpose
Pulley End Bearing Type	Ball
Pulley Face Code	Standard
Pulley Shaft Indicator	Standard
Rodent Screen	None
Service Factor	1.15
Shaft Diameter	1.125 IN
Shaft Extension Location	Pulley End
Shaft Ground Indicator	No Shaft Grounding
Shaft Rotation	Reversible
Shaft Slinger Indicator	No Slinger
Speed	1725 rpm
Speed Code	Single Speed
Starting Method	Direct on line
Thermal Device - Bearing	None
Thermal Device - Winding	None
Vibration Sensor Indicator	No Vibration Sensor
Winding Thermal 1	None
Winding Thermal 2	None

Nameplate

NP1256L									
CAT.NO.	L1430T								
SPEC.	36M926T077G1								
HP	5								
VOLTS	230								
AMP	20.6								
RPM	1725								
FRAME	184T		HZ	60		PH	1		
SER.F.	1.15	CODE	H	DES	L	CLASS	F		
NEMA-NOM-EFF	84	PF	94						
RATING	40C AMB-CONT								
CC									
DE	6206		ODE	6205					
ENCL	ODTF	SN							

Accessories

Part number	Description	Multiplier
36-3403	C FACE KIT	A8
36EP1405A09SP	D-FLANGE KIT	

AC Induction Motor Performance Data

Record # 10575

Typical performance - not guaranteed values

Winding: 36WGT077-R001		Type: 3634LC		Enclosure: ODTF	
Nameplate Data			230 V, 60 Hz: Single Voltage Motor		
Rated Output (HP)	5	Full Load Torque	15 LB-FT		
Volts	230	Start Configuration	direct on line		
Full Load Amps	20.6	Breakdown Torque	40.5 LB-FT		
R.P.M.	1725	Pull-up Torque	30.5 LB-FT		
Hz	60 Phase	1	Locked-rotor Torque	36.5 LB-FT	
NEMA Design Code	L	KVA Code	H	Starting Current	134.2 A
Service Factor (S.F.)	1.15		No-load Current	7.49 A	
NEMA Nom. Eff.	84	Power Factor	94	Line-line Res. @ 25°C	0.4981 Ω A Ph 1.6049 Ω B Ph
Rating - Duty	40C AMB-CONT		Temp. Rise @ Rated Load	60°C	
S.F. Amps			Temp. Rise @ S.F. Load	74°C	

Load Characteristics 230 V, 60 Hz, 5 HP

% of Rated Load	25	50	75	100	125	150	S.F.
Power Factor	70	86	91	94	94	94	94
Efficiency	66	79.7	83.8	84.4	82.7	79	83.4
Speed	1785	1773	1759	1741	1721	1692	1729
Line amperes	8.87	11.94	15.93	20.56	25.99	32.81	23.82

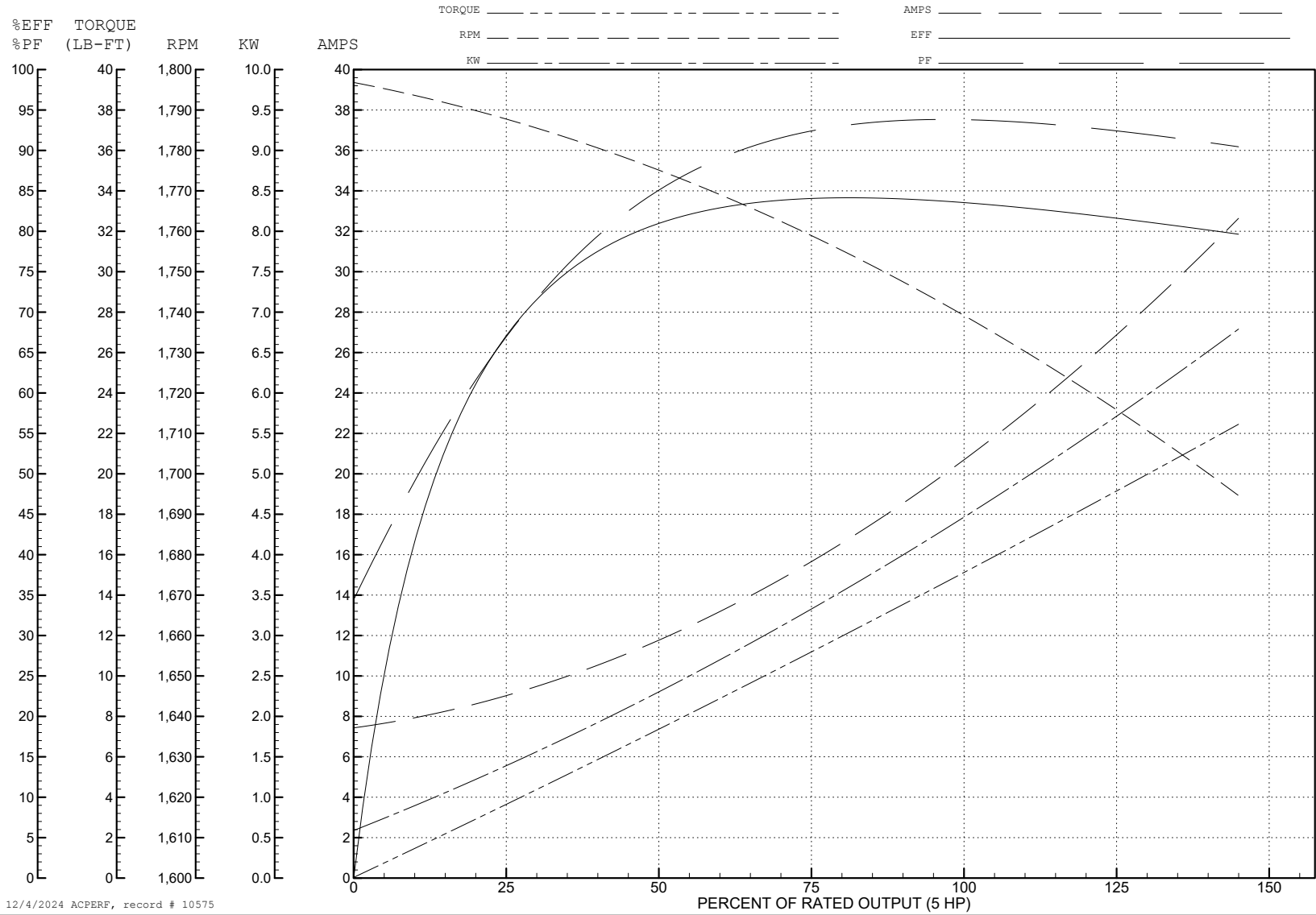
ABB Motors and Mechanical Inc.

WINDING # 36WGT077

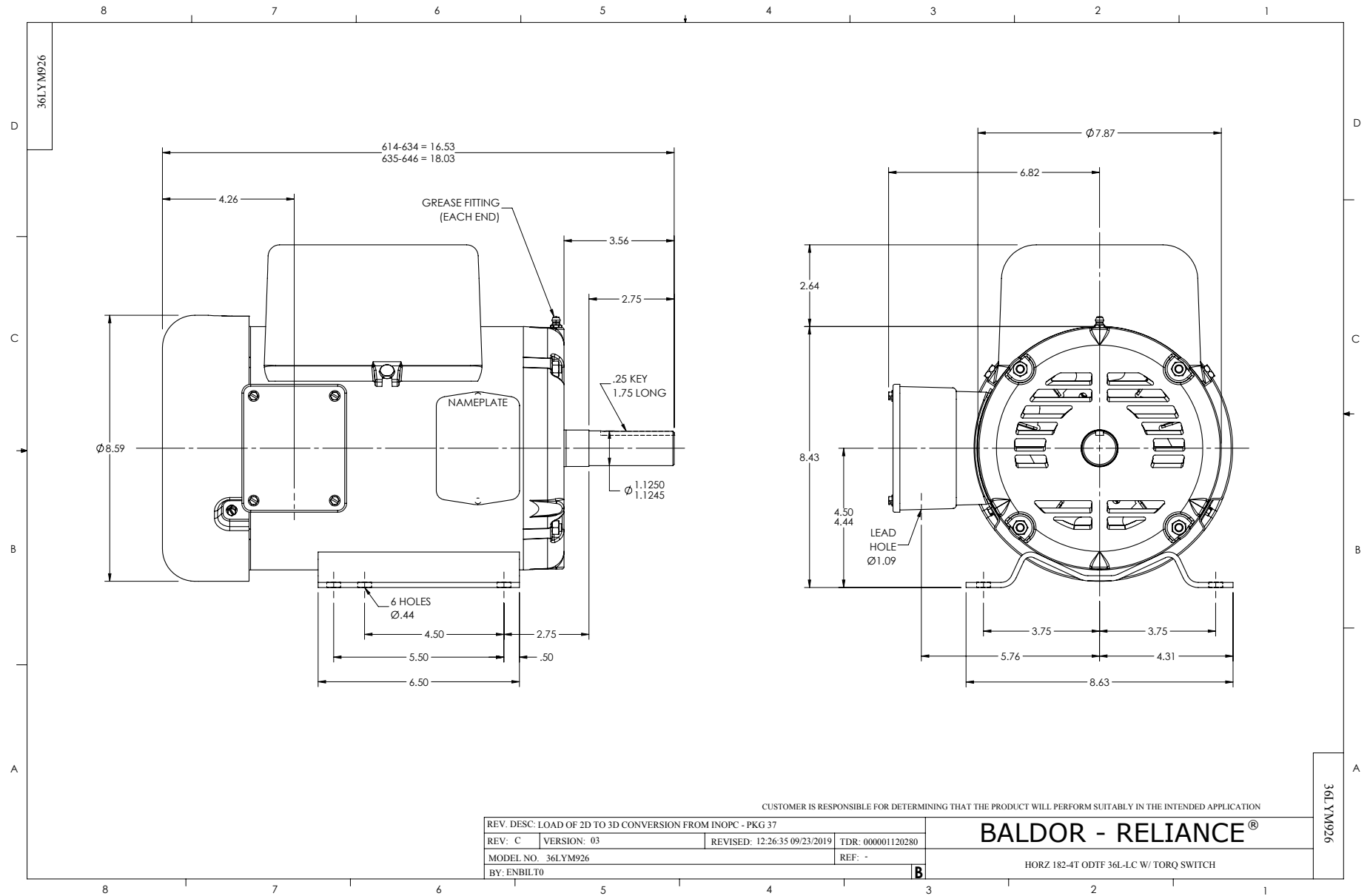
Typical performance - not guaranteed values.

5 HP 1 PH 60 HZ 1725 RPM 230 V 3634LC

TORQUES (LB-FT): PO=40.5 PU=30.5 LR=36.5 LRA=134.2



12/4/2024 ACPERF, record # 10575



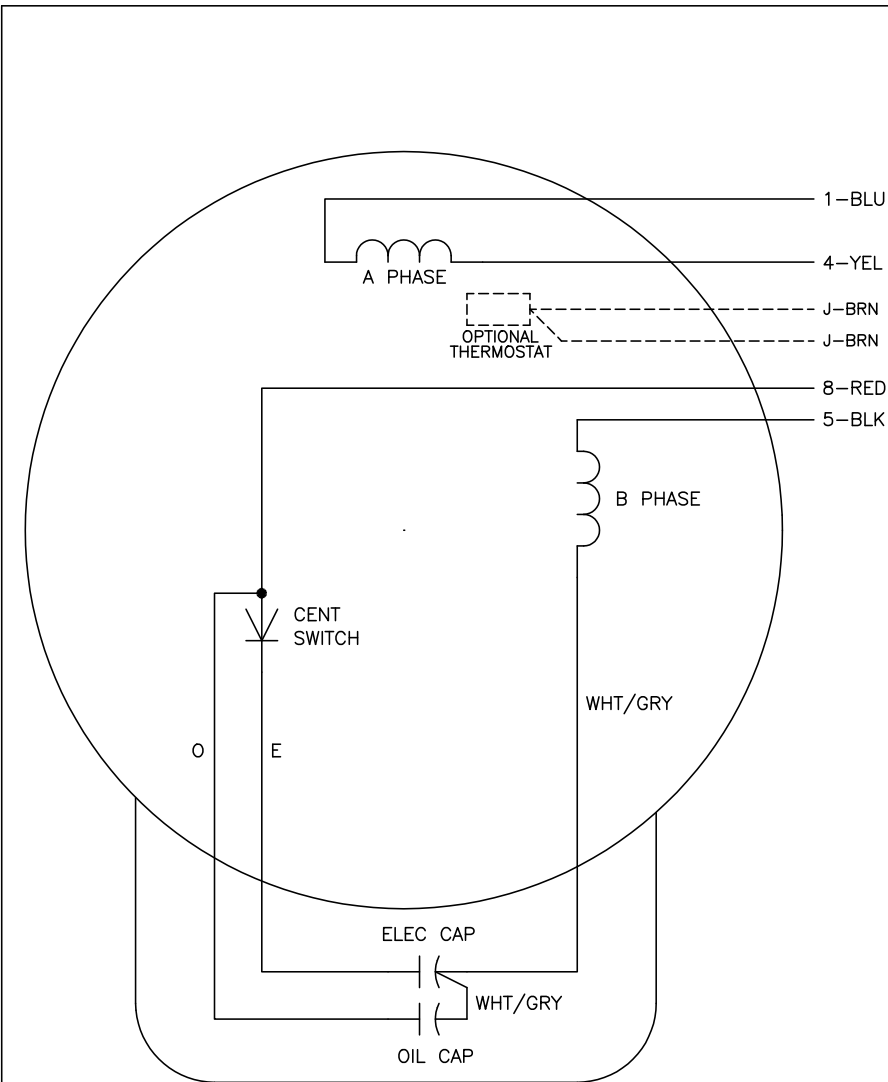
CUSTOMER IS RESPONSIBLE FOR DETERMINING THAT THE PRODUCT WILL PERFORM SUITABLY IN THE INTENDED APPLICATION

REV. DESC: LOAD OF 2D TO 3D CONVERSION FROM INOPC - PKG 37	TDR: 000001120280
REV: C VERSION: 03	REVISED: 12/26/35 09/23/2019
MODEL NO. 36LYM926	REF: -
BY: ENBILTO	

BALDOR - RELIANCE®

HORZ 182-4T ODTF 36L-LC W/ TORQ SWITCH

CD0017A02



	LINE A	LINE B
STD	1,8	4,5
OPP	1,5	4,8

NOTES:

1. STANDARD ROTATION IS CCW FACING END OPPOSITE SHAFT EXTENSION.
2. OPTIONAL THERMOSTAT IS PROVIDED WHEN SPECIFIED.
3. MULTIPLE CAPACITORS ARE CONNECTED IN PARALLEL UNLESS OTHERWISE SPECIFIED.
4. LEAD COLORS ARE OPTIONAL. LEADS MUST ALWAYS BE NUMBERED AS SHOWN.

CD0017A02

REV. DESC: REVISE TO SHOW OPTIONAL COLORS			
REV. LTR: B	BY: JLP	REVISED: 04/09/99 11:30	TDR: 0178636
CD0017A02		FILE: AAA00007514	MDL: -
		MTL: -	

BALDOR ELECTRIC Co.

TYPE LC, SV, REV, 4 LEADS