

BALDOR • RELIANCE

Customer information packet

L3356

.25HP, 3450RPM, 1PH, 60HZ, 42, 3316L, TEFC, F1

Specifications

Enclosure	TEFC
Frame	42
Frame Material	Steel
Frequency	60.00 Hz
Motor Letter Type	Cap Start, Induction Run
Output @ Frequency	.250 HP @ 60 HZ
Phase	1
Synchronous Speed @ Frequency	3600 RPM @ 60 HZ
Voltage @ Frequency	230.0 V @ 60 HZ 115.0 V @ 60 HZ
Agency Approvals	CSA UR
Ambient Temperature	40 °C
Auxillary Box	No Auxillary Box
Auxillary Box Lead Termination	None
Base Indicator	Rigid
Bearing Grease Type	Polyrex EM (-20F +300F)
Blower	None
Current @ Voltage	2.000 A @ 230.0 V 2.400 A @ 208.0 V 4.000 A @ 115.0 V
Design Code	-
Drip Cover	No Drip Cover
Duty Rating	CONT
Efficiency @ 100% Load	57.0 %
Electrically Isolated Bearing	Not Electrically Isolated
Feedback Device	NO FEEDBACK
Feedback Signal	NONE
Front Face Code	Standard
Front Shaft Indicator	None
Heater Indicator	No Heater
High Voltage Full Load Amps	2.0 a

Part detail

Revision	AS
Type	AC
Mech. spec.	33-850
Base	
Status	PRD/A
Elec. spec.	33WG0389
Layout	33LY0850
Eff. date	10-24-2024
CD Diagram	CD0001A10
Poles	02
Leads	6#18
Proprietary	False
Created date	06-25-2007

Insulation Class	B
Inverter Code	Not Inverter
KVA Code	L
Lifting Lugs	No Lifting Lugs
Locked Bearing Indicator	No Locked Bearing
Motor Lead Exit	Ko Box
Motor Lead Quantity/Wire Size	6 @ 18 AWG
Motor Lead Termination	Flying Leads
Motor Standards	NEMA
Motor Type	3316L
Mounting Arrangement	F1
Number of Poles	2
Overall Length	9.56 IN
Power Factor	64
Product Family	General Purpose
Pulley End Bearing Type	Ball
Pulley Face Code	Standard
Pulley Shaft Indicator	Standard
Rodent Screen	None
RoHS Status	ROHS COMPLIANT
Service Factor	1.35
Shaft Diameter	0.375 IN
Shaft Extension Location	Pulley End
Shaft Ground Indicator	No Shaft Grounding
Shaft Rotation	Reversible
Shaft Slinger Indicator	No Slinger
Speed	3450 rpm
Speed Code	Single Speed
Starting Method	Direct on line
Thermal Device - Bearing	None
Thermal Device - Winding	None
Vibration Sensor Indicator	No Vibration Sensor
Winding Thermal 1	None
Winding Thermal 2	None

Nameplate

NP1256L									
CAT.NO.	L3356								
SPEC.	33-850-389								
HP	.25								
VOLTS	115/230								
AMP	4/2								
RPM	3450								
FRAME	42		HZ	60		PH	1		
SER.F.	1.35	CODE	L	DES	-	CLASS	B		
NEMA-NOM-EFF	57	PF	64						
RATING	40C AMB-CONT								
CC									
DE	6203		ODE	6203					
ENCL	TEFC	SN							
	SFA 4.6/2.3								

AC Induction Motor Performance Data

Record # 6265

Typical performance - not guaranteed values

Winding: 33WG0389-R001		Type: 3316L	Enclosure: TEFC	
Nameplate Data			230 V, 60 Hz: High Voltage Connection	
Rated Output (HP)	.25	Full Load Torque	0.38 LB-FT	
Volts	115/230	Start Configuration	direct on line	
Full Load Amps	4/2	Breakdown Torque	0.98 LB-FT	
R.P.M.	3450	Pull-up Torque	0.47 LB-FT	
Hz	60 Phase	Locked-rotor Torque	1.33 LB-FT	
NEMA Design Code	- KVA Code	Starting Current	10.6 A	
Service Factor (S.F.)	1.35	No-load Current	1.5 A	
NEMA Nom. Eff.	57 Power Factor	Line-line Res. @ 25°C	7.72 Ω A Ph 5.3 Ω B Ph	
Rating - Duty	40C AMB-CONT	Temp. Rise @ Rated Load	42°C	
S.F. Amps	4.6/2.3	Temp. Rise @ S.F. Load	57°C	

Load Characteristics 230 V, 60 Hz, 0.25 HP

% of Rated Load	25	50	75	100	125	150	S.F.
Power Factor	42	52	61	68	73	77	75
Efficiency	38.7	49.2	55.9	59.9	60.2	59.8	60
Speed	3555	3528	3496	3452	3400	3357	3383
Line amperes	1.55	1.65	1.8	2	2.25	2.5	2.3

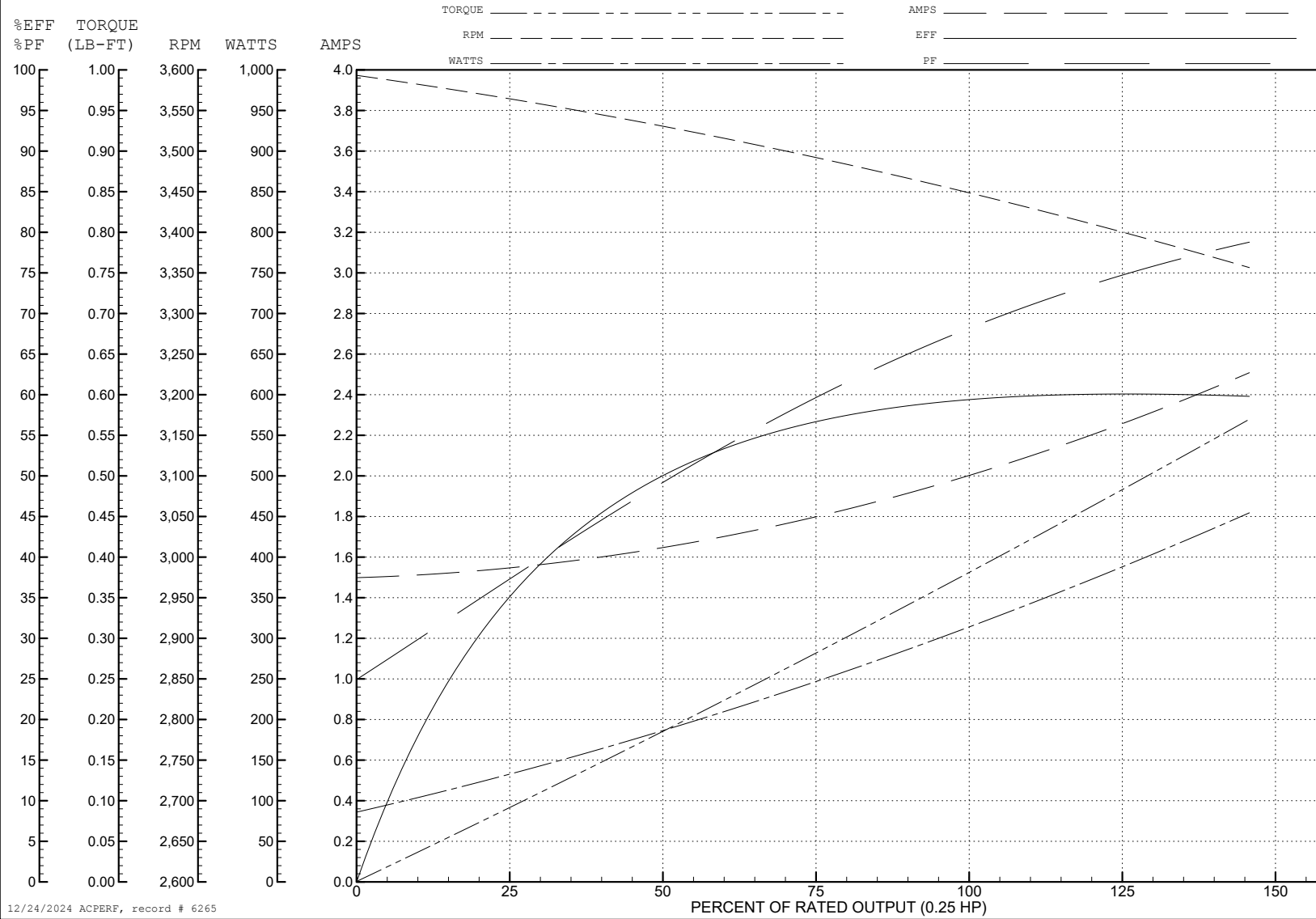
ABB Motors and Mechanical Inc.

WINDING # 33WG0389

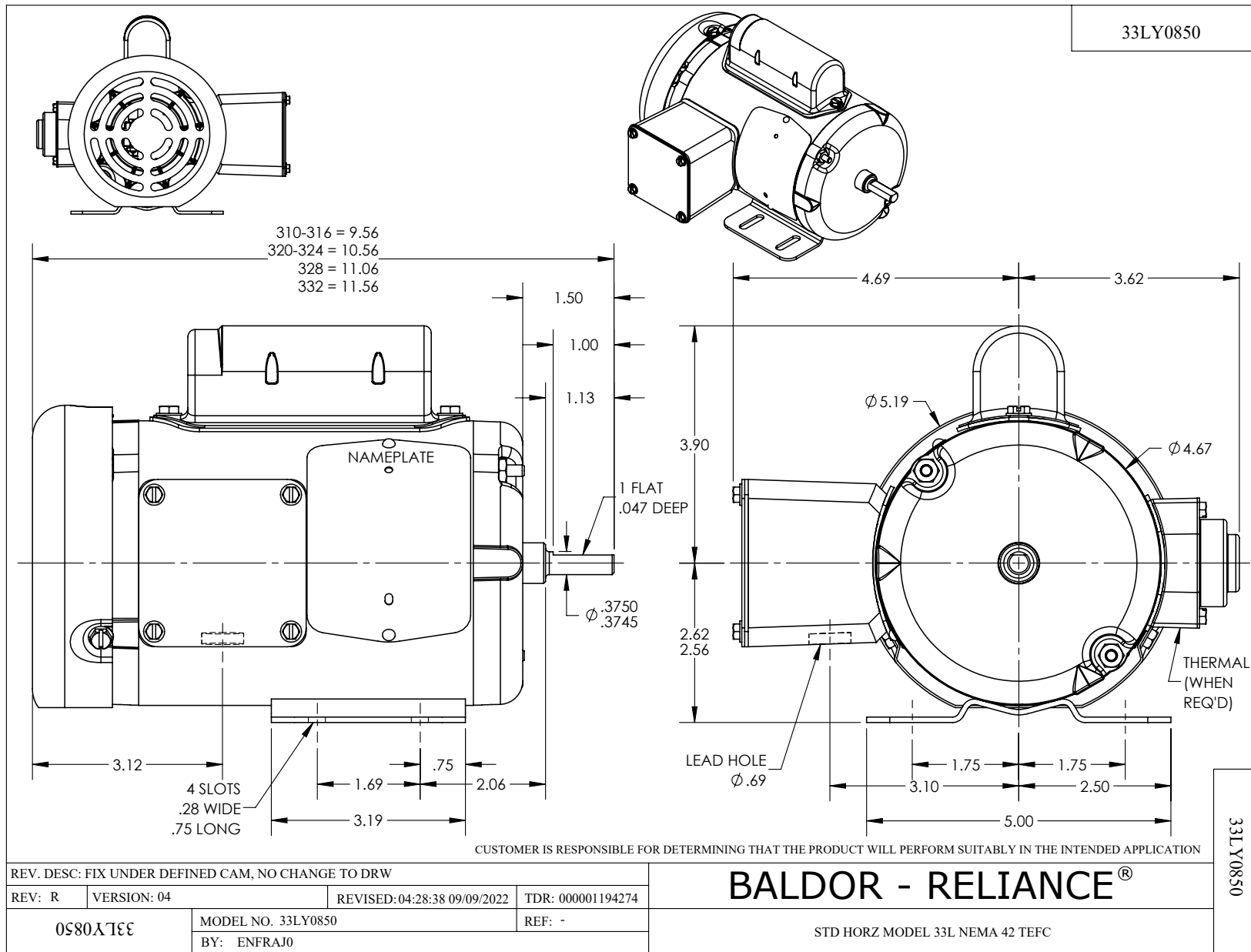
Typical performance - not guaranteed values.

0.25 HP 1 PH 60 HZ 3450 RPM 230 V 3316L

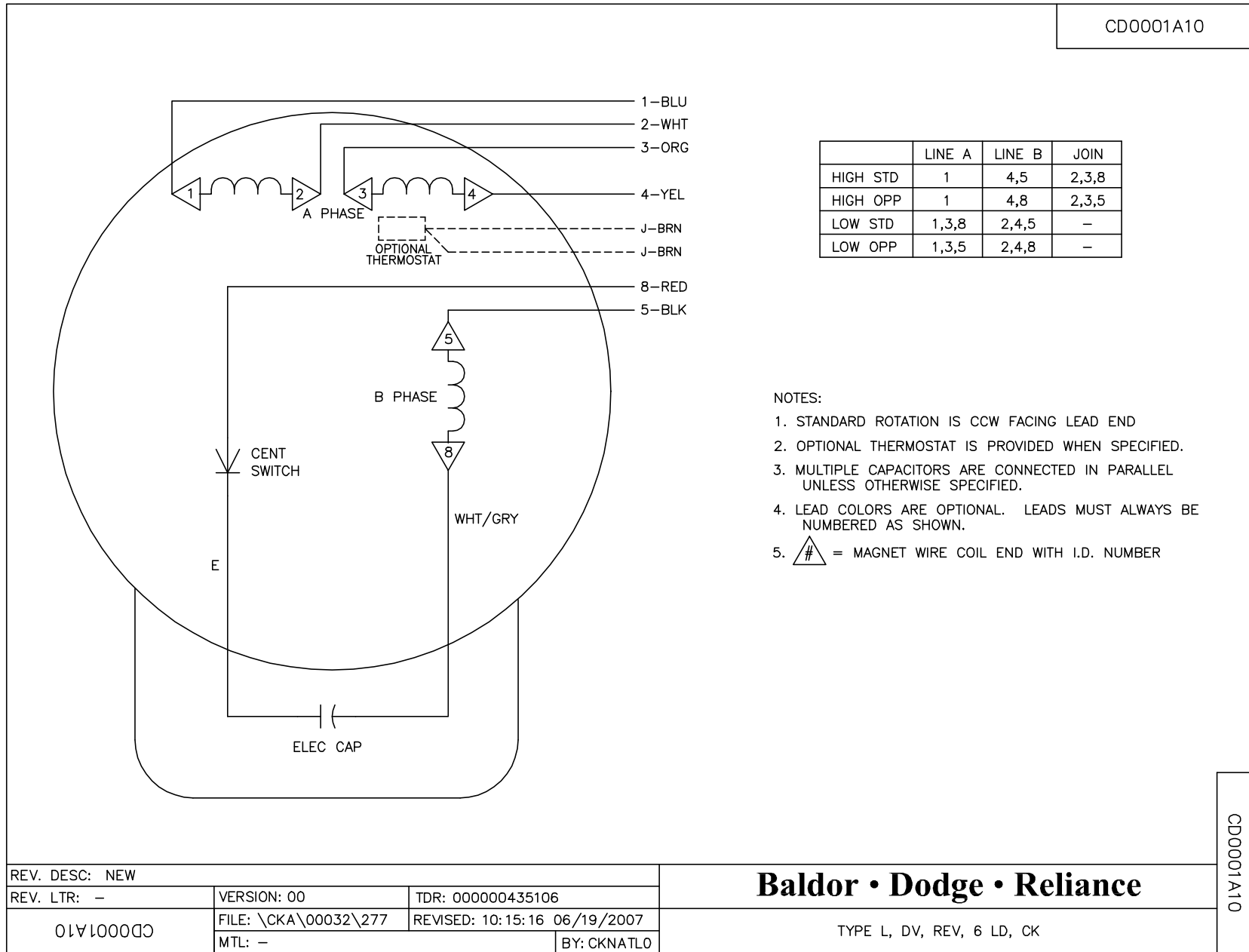
TORQUES (LB-FT): PO=0.98 PU=0.47 LR=1.33 LRA=10.6



12/24/2024 ACPERF, record # 6265



CD0001A10



REV. DESC: NEW		
REV. LTR: -	VERSION: 00	TDR: 000000435106
01A10000	FILE: \CKA\00032\277	REVISED: 10:15:16 06/19/2007
	MTL: -	BY: CKNTATLO

Baldor • Dodge • Reliance

TYPE L, DV, REV, 6 LD, CK

CD0001A10