



---

# Customer information packet

## VM3611T

3HP, 1750RPM, 3PH, 60HZ, 182TC, 3542M, TEFC, F1

Class - None

Division - Not Applicable

## Specifications

Enclosure	TEFC
Frame	182TC
Frame Material	Steel
Frequency	60.00 Hz
Haz Area Class and Group	None
Haz Area Division	Not Applicable
Motor Letter Type	Three Phase
Output @ Frequency	3.000 HP @ 60 HZ
Phase	3
Synchronous Speed @ Frequency	1800 RPM @ 60 HZ
Voltage @ Frequency	460.0 V @ 60 HZ 230.0 V @ 60 HZ 208.0 V @ 60 HZ
Agency Approvals	CSA UR
Ambient Temperature	40 °C
Auxillary Box	No Auxillary Box
Auxillary Box Lead Termination	None
Base Indicator	No Mounting
Bearing Grease Type	Polyrex EM (-20F +300F)
Blower	None
Current @ Voltage	9.100 A @ 208.0 V 8.400 A @ 230.0 V 4.200 A @ 460.0 V
Design Code	A
Drip Cover	No Drip Cover
Duty Rating	CONT
Efficiency @ 100% Load	87.5 %
Electrically Isolated Bearing	Not Electrically Isolated
Feedback Device	NO FEEDBACK
Front Face Code	Standard
Front Shaft Indicator	None

## Part detail

Revision	P
Type	AC
Mech. spec.	35L114
Base	
Status	NLA/A
Elec. spec.	35WGP797
Layout	35LYL114
Eff. date	03-08-2016
CD Diagram	CD0005
Poles	04
Leads	9#18
Proprietary	False
Created date	06-15-2010

Heater Indicator	No Heater
High Voltage Full Load Amps	4.2 a
Insulation Class	F
Inverter Code	Not Inverter
KVA Code	L
Lifting Lugs	No Lifting Lugs
Locked Bearing Indicator	Locked Bearing
Motor Lead Exit	Ko Box
Motor Lead Quantity/Wire Size	9 @ 18 AWG
Motor Lead Termination	Flying Leads
Motor Standards	NEMA
Motor Type	3542M
Mounting Arrangement	F1
Number of Poles	4
Overall Length	16.55 IN
Power Factor	78
Product Family	General Purpose
Pulley End Bearing Type	Ball
Pulley Face Code	C-Face
Pulley Shaft Indicator	Standard
Rodent Screen	None
Service Factor	1.15
Shaft Diameter	1.125 IN
Shaft Extension Location	Pulley End
Shaft Ground Indicator	No Shaft Grounding
Shaft Rotation	Reversible
Shaft Slinger Indicator	No Slinger
Speed	1750 rpm
Speed Code	Single Speed
Starting Method	Direct on line
Thermal Device - Bearing	None
Thermal Device - Winding	None
Vibration Sensor Indicator	No Vibration Sensor
Winding Thermal 1	None

**Winding Thermal 2**

**None**

---

**Nameplate**

<b>NP1256L</b>									
<b>CAT.NO.</b>	VM3611T								
<b>SPEC.</b>	35L114P797H1								
<b>HP</b>	3								
<b>VOLTS</b>	208-230/460								
<b>AMP</b>	9.1-8.4/4.2								
<b>RPM</b>	1750								
<b>FRAME</b>	182TC		<b>HZ</b>	60		<b>PH</b>	3		
<b>SER.F.</b>	1.15	<b>CODE</b>	L	<b>DES</b>	A	<b>CLASS</b>	F		
<b>NEMA-NOM-EFF</b>	87.5	<b>PF</b>	78						
<b>RATING</b>	40C AMB-CONT								
<b>CC</b>	010A								
<b>DE</b>	6206		<b>ODE</b>	6203					
<b>ENCL</b>	TEFC	<b>SN</b>							

**AC Induction Motor Performance Data**

Record # 27555

Typical performance - not guaranteed values

Winding: 35WGP797-R001		Type: 3542M		Enclosure: TEFC	
<b>Nameplate Data</b>			<b>460 V, 60 Hz: High Voltage Connection</b>		
Rated Output (HP)		3	Full Load Torque		9.08 LB-FT
Volts		208-230/460	Start Configuration		direct on line
Full Load Amps		9.1-8.4/4.2	Breakdown Torque		39.7 LB-FT
R.P.M.		1750	Pull-up Torque		23.2 LB-FT
Hz	60 Phase	3	Locked-rotor Torque		27.3 LB-FT
NEMA Design Code	A KVA Code	L	Starting Current		36.6 A
Service Factor (S.F.)		1.15	No-load Current		2.27 A
NEMA Nom. Eff.	87.5 Power Factor	78	Line-line Res. @ 25°C		4.59 Ω
Rating - Duty		40C AMB-CONT	Temp. Rise @ Rated Load		66°C
S.F. Amps			Temp. Rise @ S.F. Load		83°C
			Locked-rotor Power Factor		45
			Rotor inertia		0.248 LB-FT <sup>2</sup>

**Load Characteristics 460 V, 60 Hz, 3 HP**

% of Rated Load	25	50	75	100	125	150	S.F.
Power Factor	37	58	71	78	82	85	80
Efficiency	79.9	86.5	87.8	87.5	86.5	85	86.9
Speed	1789	1777	1764	1750	1734	1717	1740
Line amperes	2.46	2.88	3.46	4.16	4.99	5.91	4.66

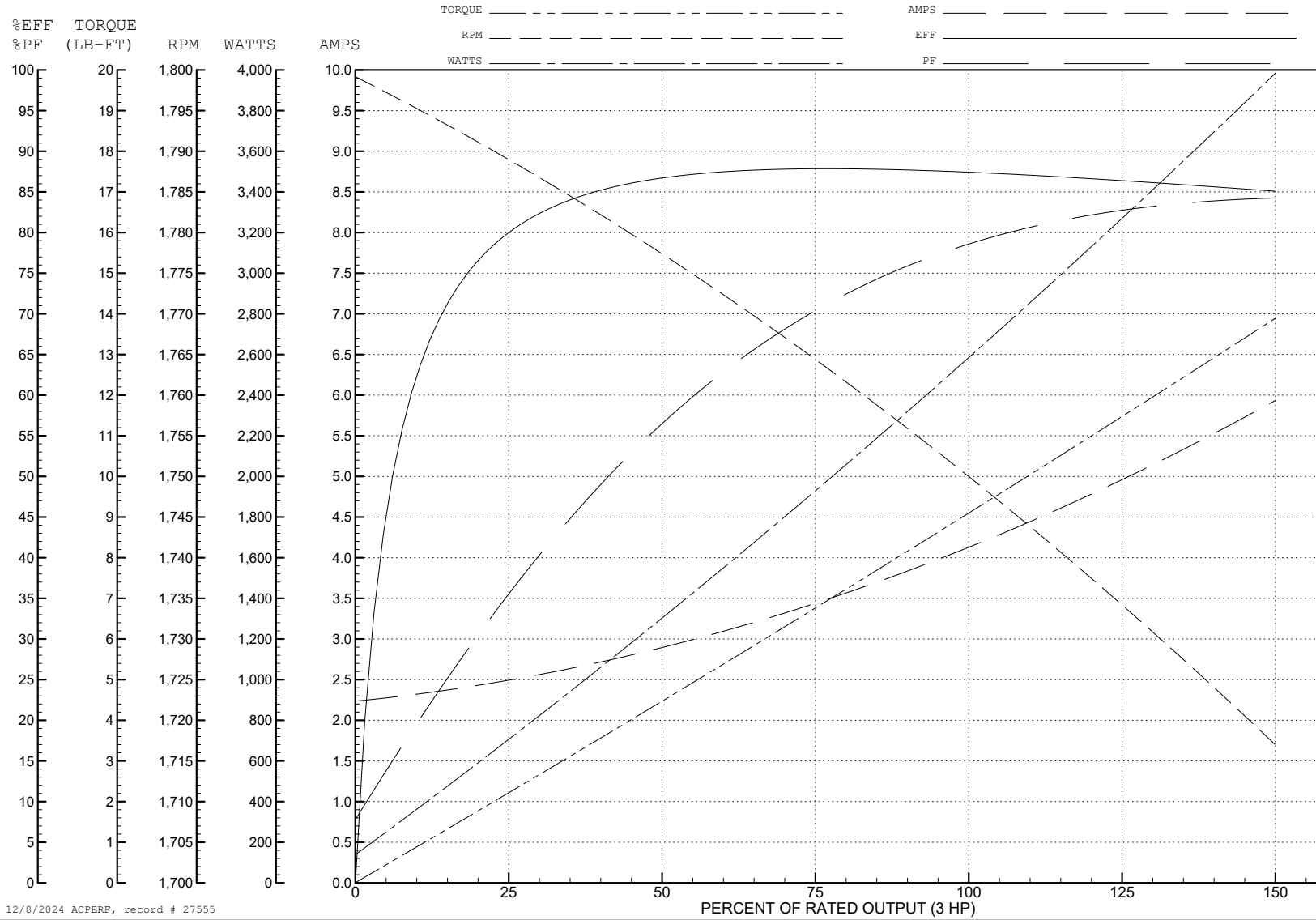
ABB Motors and Mechanical Inc.

WINDING # 35WGP797

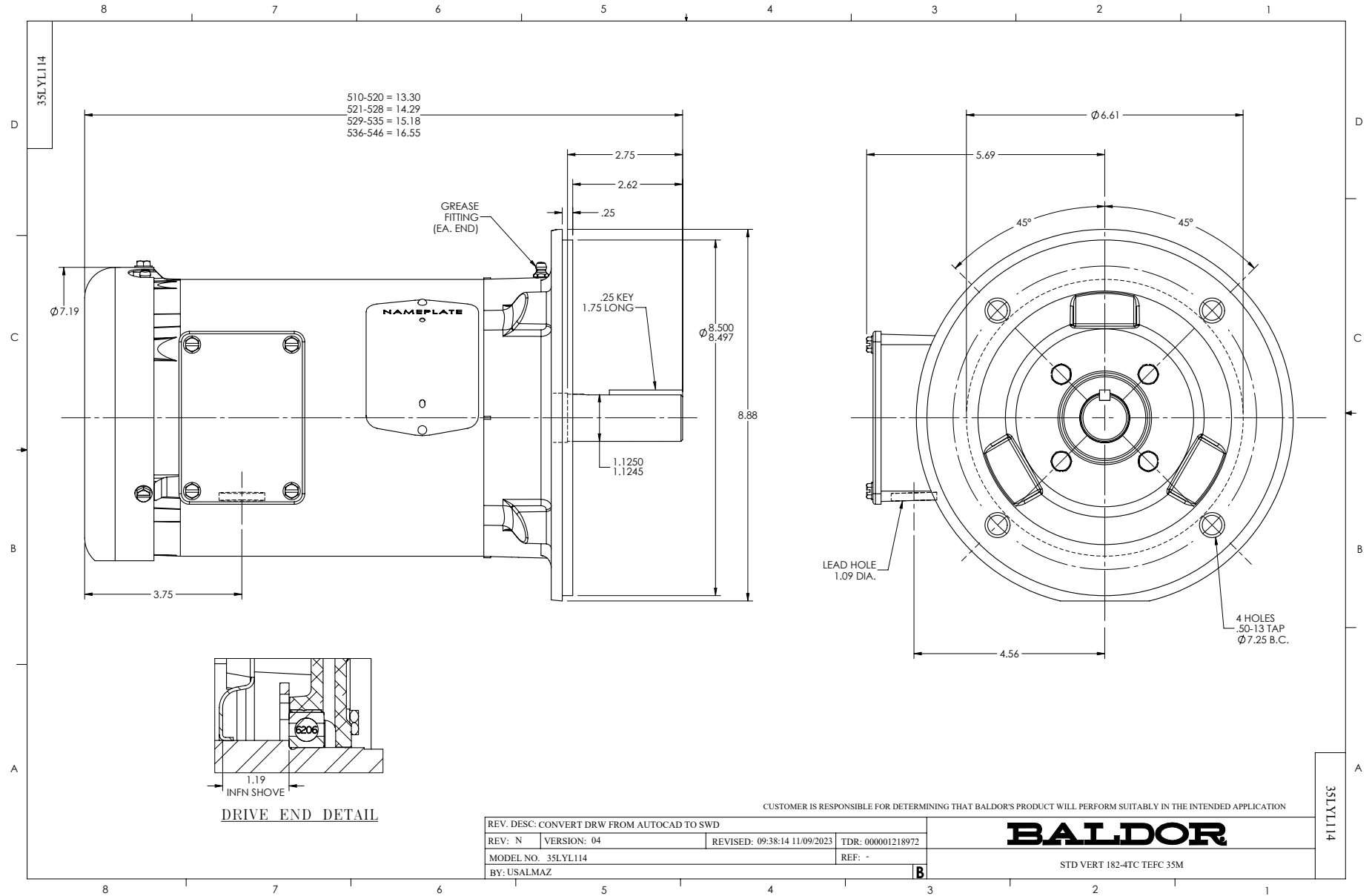
3 HP 3 PH 60 HZ 1750 RPM 460 V 3542M

Typical performance - not guaranteed values.

TORQUES (LB-FT): PO=39.7 PU=23.2 LR=27.3 LRA=36.6



12/8/2024 ACPERF, record # 27555





CD0005



LOW VOLTAGE  
(2Y)



LINE

HIGH VOLTAGE  
(1Y)



LINE

NOTES:

1. INTERCHANGE ANY TWO LINE LEADS TO REVERSE ROTATION.
2. OPTIONAL THERMOSTATS ARE PROVIDED WHEN SPECIFIED.
3. ACTUAL NUMBER OF INTERNAL PARALLEL CIRCUITS MAY BE A MULTIPLE OF THOSE SHOWN ABOVE.
4. LEAD COLORS ARE OPTIONAL. LEADS MUST ALWAYS BE NUMBERED AS SHOWN.

REV. DESC: REVISE TO SHOW OPTIONAL COLORS			
REV. LTR: E	BY: JLP	REVISED: 01/19/99 10:15	TDR: 0171435
S00000		FILE: AAA00005140	MDL: -
		MTL: -	

**BALDOR ELECTRIC Co.**

3PH, DV, 9 LEADS

CD0005